



Mercury MerCruiser 2008



yes, but does it have a **MerCruiser[®]** ?

Ok, you've found the perfect boat. You're eager to get it out on the water and start enjoying it right away. But there's one really important question before you buy it: "Does it have a MerCruiser?"

You see, the propulsion system is the heart of your boat; Why put all the effort into finding just the right boat without being sure you have the right power? And the right power is MerCruiser.

Look inside this brochure and discover our wide variety of drives, engines and options that allow us to create a propulsion system that seamlessly integrates with your boat.

For the ultimate in reliability, performance and ease of ownership, there's only one choice – MerCruiser.



J.D. Power Award 2006 & 2007
Mercury MerCruiser "Highest In Customer Satisfaction With Sterndrive Engines"

an **Evolutionary** Sterndrive System

All New Engine and Sterndrive System

- Enables boat layouts impossible with other types of propulsion
- Class leading driving experience with ultra-low noise and vibration
- Improved access to the water for swimming and water sports
- Engine mounting angle is 50 degrees from vertical
- This is the first sterndrive configuration to adopt this height-reducing design
- Allows Vazer to fit neatly beneath the rear seat or casting deck of smaller boats
- The engine is coupled to a sterndrive unit that is approximately 10 cm (4") shorter than current drives

Engine Specifications

1.6L (98 CID) GM based engine

100 HP (74.7 kW) @ 6,000 RPM

Sturdy cast iron block, aluminium cylinder head

Compact, scroll design composite intake manifold system; reduces noise, improves power

Single Overhead Cam (SOHC)

No valve adjustments for the life of the engine

Multi-port electronic fuel injection

Crisp performance and turnkey start

ECM 555

Closed-cooled block, cylinder head and exhaust system with long life. 5-year coolant for corrosion resistance and low maintenance

Translucent coolant reservoir for quick level check

Self-draining seawater cooling passages

Translucent power steering fluid reservoir

65A alternator with automatic self-tensioning belt

Engine Guardian™ - Intelligent engine protection system

SmartCraft® compatible

MerCruiser easy engine oil removal system and quick-connect freshwater flush port for simple maintenance

Design protected for 3-way exhaust catalyst system

Remote spin-on oil filter

Heater connection points

100/300 hour service intervals

See what tomorrow looks like... Now.

What would happen if tomorrow boat manufacturers had the opportunity to take their boat designs...



FROM THIS...

TO THIS?

Drive Features and Specifications

- Engine mounts on outer transom assembly for more consistent alignment
- Full 60 degrees of steering radius for excellent manoeuvrability
- Full-size 4.75" (12 cm) Alpha gearcase handles propellers up to 16" (41 cm) in diameter
- 2.6:1 or optional 2.8:1 gear ratios for strong acceleration and broad propeller selection

POWER. CONFIDENCE. FREEDOM.

meeting your **specific** needs

Every boater has unique requirements, which is why MerCruiser offers petrol sterndrives to meet almost every application from fishing, to cruising, to racing.

Every new petrol multi-port fuel injected (MPI) sterndrive comes complete with our performance-enhancing SmartCraft® technology which monitors and fine-tunes your engine for maximum efficiency thanks to features such as multi-port fuel injection and Engine Guardian™. The result is a powerful combination of protection and performance.

TURN-KEY STARTING (TKS) SYSTEM FOR CARBURETTOR ENGINES

MerCruiser developed the new TKS System, which utilizes a redesigned carburettor with an automatic fuel-enrichment system instead of a traditional choke. TKS produces instant, effortless starts at the turn of a key – even in cold weather. Turn-key starting is now standard on all carburetted sterndrive and inboard engines.

ALPHA WATER DRAIN SYSTEM

This water drain system is easy to access and operate. It's available on all SmartCraft MPI models coupled to the Alpha® drive.

EASY-ACCESS DRIVE LUBE MONITOR

Easily accessed on all petrol sterndrive engines, the drive lubricant can be checked and refilled from inside the boat. Drive lube level is also electronically monitored through Engine Guardian or Audio Warning System.

EASY OIL DRAIN SYSTEMS

Changing your boat's engine oil has never been easier or faster. Our easy oil drain system is standard on all petrol sterndrive models.

POWER TRIM XD

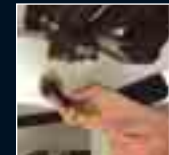
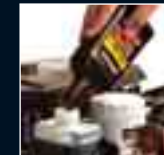
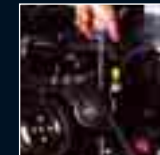
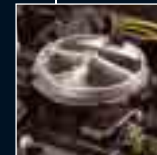
Couples precise trim position with drive protection to cushion the drive unit during impact. A hydraulic memory system returns the drive to the previous trim position so you maintain steering control.

AUDIO WARNING SYSTEM

Our Audio Warning System warns you of low oil pressure, high engine temperature, excessive transmission temperatures (inboards), and low drive lubricant (sterndrives). Standard on all petrol models.

FLUIDLY SMOOTH. DIGITALLY PRECISE

Simply put, the Digital Throttle & Shift (DTS) System brings digital precision to the shifting process by totally eliminating traditional cables. Utilizing the power of our PCM 555 controller with a special purpose-built shift solenoid and electronic throttle body, DTS provides an uncommonly smooth, precise shifting feel with responsive throttle control – all with minimal effort. The system is now available on nine additional models in the MerCruiser line up, extending the options on Bravo sterndrive models from the 5.0 MPI to the 496 MAG HO and the 350 MAG and 8.1S HO inboards.



Mercury Racing *STERNDRIVES* 600 SCi – 662 SCi EU approved

we're **driven** to **win** !

Mercury Racing continues to develop new MerCruiser sterndrive engines to meet the needs of performance boaters worldwide. Our latest additions include the 600 SCi and the brand new EU662 SCi.

The 600 SCi was the first Mercury Racing sterndrive engine package certified for sale in the European Union.

The all-new EU662 SCi features Mercury Racing's revolutionary NXT¹ transmission and drive. This engine has been exclusively developed for sale in all countries that fall under the European Recreational Craft Directive.

Specifications

Horsepower: 600 (447 kW) – 662 (494 kW)

Full throttle RPM Range: 4800 - 5200

Displacement: 8.2 (502 CID)

Bore (in/mm): 4.47/113

Stroke (in/mm): 4.00/102

Compression ratio: 7.5:1

Cylinders : V-8

Ignition Type: PCM 07 Distributorless

Fuel System: Sequential Fuel Injection

Transmission: Mercury Racing Dry-Sump

Drive unit 600 SCi: Bravo One XR, Bravo One XR Sport Master , NXT¹ or NXT¹ SSM Drive

Drive unit EU662 SCi: NXT¹ or NXT¹ SSM Drive

Length (in/mm) 600 & 662 SCi: 35.7/907

Width (in/mm) 600 & 662 SCi: 33/838

Height (in/mm) 600 SCi: 27.2/691

Height (in/mm) 662 SCi: 27.9/709

Weight (lbs/kg) 600 SCi: 1267/575

Weight (lbs/kg) 662 SCi: 1548/702



MerCruiser Drives

handle the **biggest** boats with **authority**

Boaters are always looking for more power, more options, more durability which is why MerCruiser produces the biggest range of drives in the business. We cover every application imaginable and whether you choose Alpha or Bravo drives with their smooth, quiet shifting or the durable Bravo X Series, you're assured of peak performance and maximum durability.



ALPHA ONE

The Alpha® drive delivers reliable performance in a value package.
Reliability: Spiral-cut steel bevel gears for quiet operation and extended durability + XK-360 low-copper aluminium alloy for corrosion resistance.
Performance: 3, 4 or 5 blade propellers available for pulling power or top-speed applications.
Easy ownership: Permalube® U-joints eliminate the need for periodic lubrication.



BRAVO ONE

The Bravo ONE® drive delivers superior performance with best-in-class shifting.
Reliability: precision-shimmed forged steel gears for smooth quiet operation and durability.
Performance: trim-limit switch sets drive angle for maximum performance every time.
Easy ownership: greaseable Drive Coupler allows for service without removing the drive unit.



BRAVO TWO

The Bravo TWO drive delivers high thrust around the dock, early planing and improved fuel economy.
Reliability: tri-paint system for a tough, durable corrosion-resistant barrier.
Performance: large Bravo Two 20-inch propellers provide maximum lift and thrust for large boats.
Easy ownership: maintenance-free hinge pins allow for service without pulling the boat from the water.



BRAVO THREE

The Bravo Three drive is the leader in twin, counter-rotating propeller stern drives, designed for rail-like stability through turns as well as faster acceleration.
Reliability: largest available propshaft offered with twin-prop design.
Performance: Bravo Three twin props and large rudder area allow for better handling with single-engine boats.
Easy ownership: greaseable Gimbal Bearing allows for service without removing the drive unit.



BRAVO X

Designed specially for big block 8.1-litre high-output engines, this is a super strength drive with high performance attributes.



BRAVO XR

Direct from the Factory Class winners' circle and available for your boat, the XR Drives are all about performance and being first to the chequered flag.

See your dealer about selecting the right propeller from Quicksilver's wide offering



ENERTIA



MAXIMUS



BLACK MAX



VENGEANCE



LASER II



MIRAGE PLUS



ALPHA 4



VENSURA



REVOLUTION 4



BRAVO I



HIGHFIVE



220 HP – 425 HP (Bravo Models Only)

the **ultimate** saltwater system, unmatched corrosion protection, unequaled **performance**

Saltwater can take its toll on marine propulsion systems. That is why the Seacore™ System from MerCruiser offers more than just improved corrosion resistance. It's as close as a marine propulsion system can come to being corrosion-proof.

The heart of the corrosion-resistant strength of the SeaCore System is the hardcoat anodizing of the drive alloy. This process actually changes the molecular structure of the XK-360 aluminium alloy, creating a shield against the ravages of galvanic corrosion. Hardcoat anodizing is also more abrasion resistant than case-hardened steel, but if the drive is scratched, the anodizing slows the destructive growth of corrosion through the drive surface.

The SeaCore System also provides corrosion protection for the engine with standard features like closed-cooling and a stainless steel package.

Corrosion protection features

Industrial hardcoat anodized XK-360 aluminium alloy

MerCathode

SeaCore stainless steel package

Closed-cooling system

Dry-joint exhaust system

Ceramic-coated or stainless steel exhaust elbows

Freshwater Flushing



INBOARDS 300 HP – 420 HP

a **powerful** combination of **protection** and performance

The MerCruiser reputation for unsurpassed performance and reliability extends to our inboards which feature virtually maintenance-free Horizon™ engine technology plus 3 years of factory-backed product protection and a 3 year extended maintenance cycle.

But that's only the beginning of the good news. We offer inboards for a wide range of applications in power outputs ranging from 300 to 420 hp. And now all MPI inboard models come complete with SmartCraft technology which monitors and fine-tunes your engine for peak efficiency and performance through features such as our multi-port fuel injection system, Engine Guardian and more. A powerful combination of protection and performance.

AIR-ACTUATED SINGLE-POINT WATER DRAIN

A hand-operated air pump drains the raw-water cooling circuit through two easily accessible valves located low on the engine. Standard or optional, depending on specific model.

ENGINE GUARDIAN

A standard feature on all MerCruiser MPI engines with SmartCraft technology, Engine Guardian works with the Audio Warning System to monitor and protect against engine, drive or transmission damage if monitored temperatures or pressures vary from the normal range.

MULTI-PORT FUEL INJECTION SYSTEM

The MPI system injects fuel into an intake port adjacent to each cylinder. This results in a precisely tuned and efficient engine offering exceptional acceleration, throttle response and dependable turnkey starting.

8.1S INBOARD ELECTRIC SHIFT TRANSMISSION

All inboard engines equipped with SmartCraft DTS feature the new electric shift transmission. The system delivers reliable shifts and exceptional durability via solenoid-controlled hydraulics to shift gears and pressure sensors that monitor clutch-pack performance for Transmission Guardian.



TOW SPORTS INBOARDS 315 HP – 340 HP

a **scorpion** stings,
everything else bites

Designed and built with one purpose: to deliver the most efficient pulling power with the right amount of torque just when you need it – that's Black Scorpion.

Black Scorpion is also smart. Fully compatible with SmartCraft technology to give you full control at the helm and over the water, we've got you covered with features like Engine Guardian for system monitoring and protection.

See www.black-scorpion.com to be stung.

Features

90mm throttle body for higher torque output and throttle response

Tunnel ram intake manifold like those found on dragsters for more power and thrust

Custom-calibrated so you don't have to modify it

Lower profile and centre of gravity

Simple maintenance features such as Easy Water and Oil Drain

MX 6.2 Black Scorpion comes with long-stroke 4340 forged-steel crankshaft

BLACK SCORPION





a **certifyable** better boat

When you see the Installation Quality Certification symbol on a new MerCruiser-powered boat, you can be assured it comes with:

- a three-year Mercury MerCruiser limited warranty
- a commitment from Mercury MerCruiser and the boat manufacturer to delivering high-quality products.

The Installation Quality Certification Program was developed to recognize MerCruiser Boatbuilder customers who have achieved higher manufacturing standards. It is the first and only comprehensive manufacturer-installation certification program in the industry.

Certification applies leading-edge methodologies to create:

- Efficiencies and best practices specific to engine installation
- World-class assembly and component specifications
- Efficient installation processes
- Industry standard end-of-line test procedures

Boat manufacturers that successfully complete the rigorous programme earn Installation Quality System Certified Manufacturer status and receive an additional year of Mercury limited factory warranty coverage on their MerCruiser-powered boats that are registered on and after their certification date for all worldwide registrations.

PETROL ENGINE SPECIFICATIONS

	SmartCraft	Horsepower	RPM Range	Displacement Liter/CID	Cylinders	Fuel System	Digital Throttle & Shift Option	Closed-Cooling	Water Drain System*		Drive Options	Total Weight (kg)
									Alpha	Bravo/Inboard		
VAZER												
100	Yes	100 hp (74.7 kW)	5600 - 6000	1.6/98	Inline-4	MPI	No	Standard	N/A	N/A	Vazer	260
STERNDRIVES												
496 MAG High Output (HO)	Yes	425 hp (317 kW)	4600 - 5000	8.1/496	V-8	MPI	Yes	Standard	N/A	Standard	Bravo One X, XR Bravo Two X Bravo Three X, XR	544 551 556
496 MAG	Yes	375 hp (280 kW)	4400 - 4800	8.1/496	V-8	MPI	Yes	Standard	N/A	Standard	Bravo One, XR Bravo Two Bravo Three, XR	544 553 557
MX6.2 MPI	Yes	320 hp (239 kW)	4800 - 5200	6.2/377	V-8	MPI	Yes	Kit	N/A	Optional	Bravo One Bravo Two Bravo Three	451 459 463
350 MAG MPI	Yes	300 hp (224 kW)	4800 - 5200	5.7/350	V-8	MPI	Yes	Standard	N/A	Standard	Bravo One Bravo Two Bravo Three	475 482 486
5.0 MPI	Yes	260 hp (194 kW)	4600 - 5000	5.0/305	V-8	MPI	Yes	Optional or Kit	Standard	Optional	Alpha Bravo One Bravo Two Bravo Three	433 451 459 463
4.3 MPI	Yes	220 hp (164 kW)	4400 - 4800	4.3/262	V-6	MPI	No	Optional or Kit	Standard	Optional	Alpha Bravo Two Bravo Three	393 414 419
4.3L	No	190 hp (142 kW)	4400 - 4800	4.3/262	V-6	TKS Carb	No	Optional or Kit	N/A	N/A	Alpha Bravo Two Bravo Three	385 405 410
3.0L	No	135 hp (101 kW)	4400 - 4800	3.0/181	Inline-4	TKS Carb	No	Optional or Kit	Standard	N/A	Alpha	288
INBOARDS												
8.1S High Output (HO)	Yes	420 hp (313 kW)	4400 - 4800	8.1/496	V-8	MPI	Yes	Standard	N/A	Standard	N/A	513
8.1S Horizon	Yes	370 hp (276 kW)	4200 - 4600	8.1/496	V-8	MPI	Yes	Standard	N/A	Standard	N/A	513
MX6.2 MPI Horizon	Yes	320 hp (239 kW)	4600 - 5000	6.2/377	V-8	MPI	Yes	Standard	N/A	Standard	N/A	431
MX6.2 MPI	Yes	320 hp (239 kW)	4600 - 5000	6.2/377	V-8	MPI	Yes	Optional	N/A	Optional	N/A	390
350 MAG MPI Horizon	Yes	300 hp (224 kW)	4600 - 5000	5.7/350	V-8	MPI	Yes	Standard	N/A	Standard	N/A	427
350 MAG MPI	Yes	300 hp (224 kW)	4600 - 5000	5.7/350	V-8	MPI	Yes	Optional	N/A	Optional	N/A	390
TOW SPORTS INBOARDS												
MX 6.2 Black Scorpion	Yes	340 hp (254 kW)	4800 - 5200	6.2/377	V-8	MPI	No	N/A	N/A	N/A	N/A	373
Black Scorpion	Yes	330 hp (246 kW)	4800 - 5200	5.7/350	V-8	MPI	No	N/A	N/A	N/A	N/A	373
350 MAG MPI	Yes	315 hp (235 kW)	4600 - 5000	5.7/350	V-8	MPI	No	N/A	N/A	N/A	N/A	369

General Notes

- Approximate engine and drive weights. Individual units may vary slightly.
- Option availability determined by boat manufacturer within its boat model offerings.
- Performance obtained and corrected in accordance with SAE J1228 crankshaft power.
- All models and specifications are subject to change without notice or without incurring obligations to modify previously manufactured products.

* MerCruiser offers a variety of easy water drain strategies depending upon application, design and in some cases by boat model. The Alpha drain systems typically involve turning a handle or removing quick-connect hoses to drain. The Bravo/Inboard water drain systems are also found on most closed-cooled models and are activated by pressurized air. Some OEM customers request these systems be removed.

take **good care** of your engine

When you've made an investment in a beautifully engineered Mercury MerCruiser engine, it makes sense to keep it that way and protect your warranty by only using genuine Quicksilver parts, accessories and maintenance products. Quicksilver is the most respected name in the marine after-market, world-wide, because all of its products are specifically developed for the marine environment.
Demand your dealer uses only Quicksilver products!

before the boating season >> pre-season preparations

The pre-season time is the most exciting time of the year. Boats are taken out of the garage and you start preparing your boat for the next summer. Quicksilver offers a complete range of products to prepare your engine and boat to be in perfect shape for a season full of boating excitement. Visit your dealer in spring and go to www.quicksilvertune-up.com to learn about our pre-season promotion campaigns.

during the boating season

You want to try something new?
Visit your Mercury MerCruiser dealer and discover Quicksilver's wide range of water sports accessories.

after the boating season >> winterizing

After a season full of boating fun, your engine needs a winter break. Autumn is the perfect time to prepare your boat and engine for winter storage. Quicksilver offers the broadest range of winterizing products to keep your boat and engine in perfect shape during winter time. Visit your dealer and go to www.quicksilverwinterization.com to learn about our winterizing promotion campaigns.



© 2007 Brunswick Marine in EMEA. All Rights Reserved.

Brunswick Marine in EMEA continuously explores means to improve the products it designs, manufactures and distributes. Every effort is made to produce sales and service literature which is current. Changes to specifications of engines, boats and accessories are ongoing. This brochure should not be regarded as a precise guide to the latest specifications. This brochure is also not an offer for sales of any particular engine, boat or accessory. Distributors and dealers are not agents of Brunswick Marine in EMEA or one of its affiliates and they have no authority to bind Brunswick Marine in EMEA by any express undertaking or representation, including but not limited to representations of product, sales, applications or service nature. Not all products are available in all countries. Some products shown in this catalogue are equipped with optional accessories. Please see your local dealer.
visit <http://www.BrunswickMarineEMEA.com>



BRUNSWICK MARINE in EMEA
ISO 9001 - 2000 CERTIFIED

The quality system of
Brunswick Marine in EMEA
is ISO 9001:2000 certified

GB - Printed in Belgium. Part #: 90-813397-08